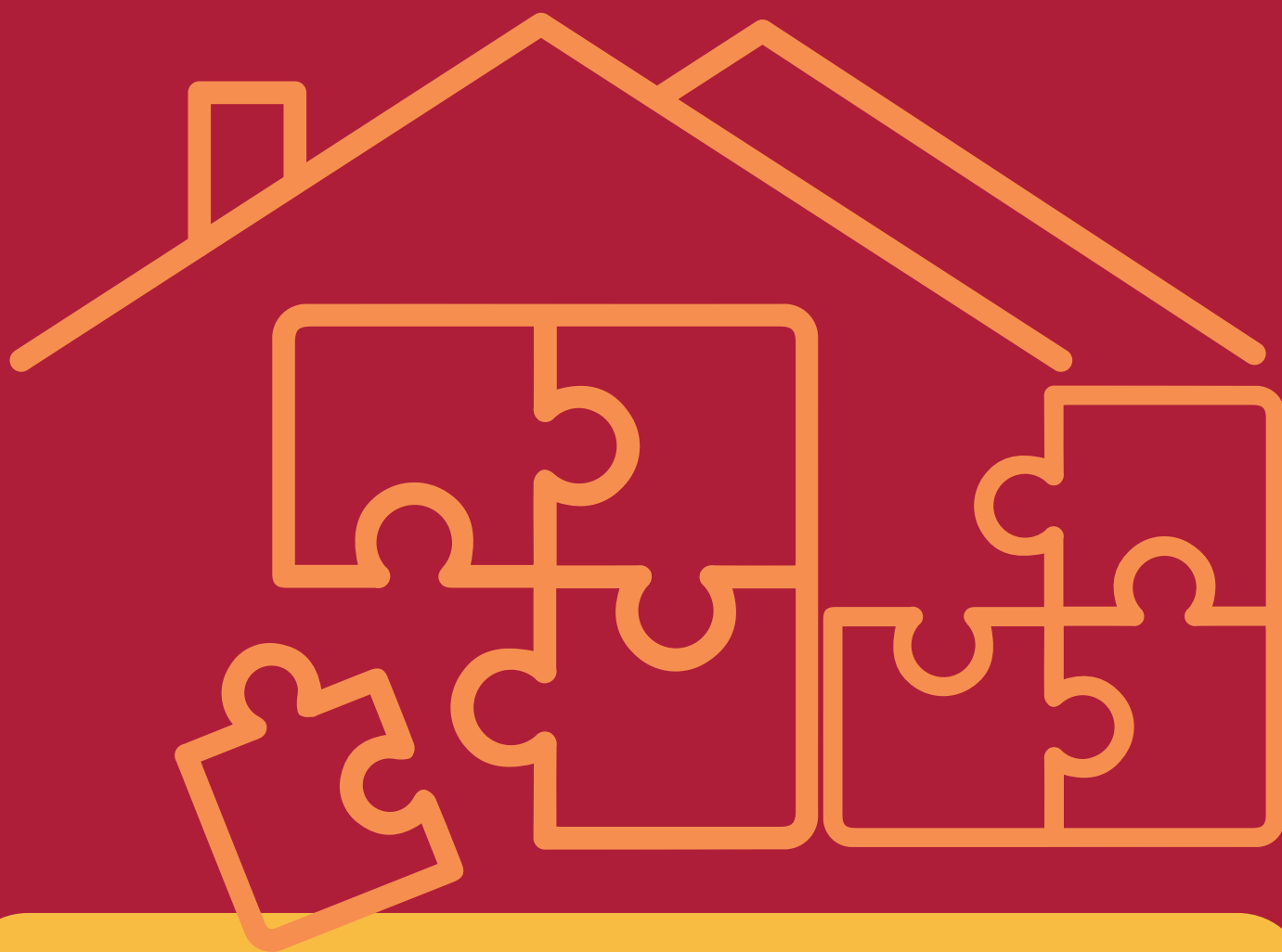




INTEGRITY | TRUST | RESPECT | COLLABORATIVE | COURAGEOUS | CREATIVE



2024 CONFERENCE
PRACTICE INSPIRED LEADERSHIP

ADELAIDE PAVILION | 11 SEPTEMBER 2024



The 2024 Toward Home Alliance Conference
is proudly brought to you by



**LUTHERAN
CARE**



Aboriginal Family Support Services
Together with the community



**baptist
care sa**

Hutt St Centre

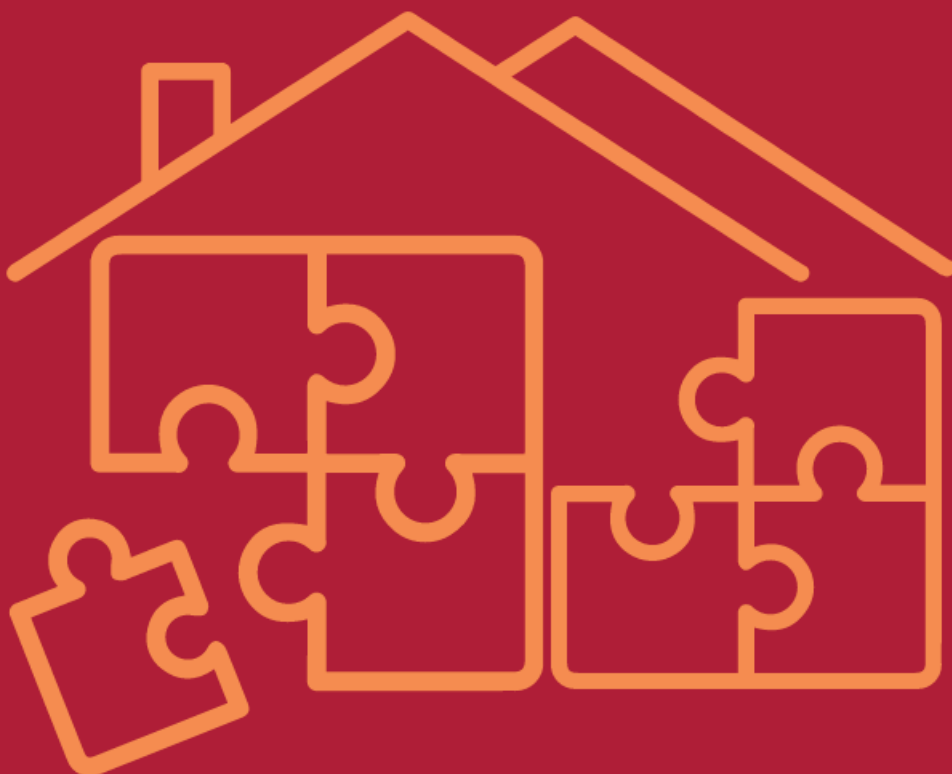
**MISSION
AUSTRALIA**



Sonder
Better Care Better Health



Supported by
**Government of
South Australia**



WELCOME MESSAGE

Alliance Leadership Team

On behalf of the Alliance Leadership Team, we are delighted to welcome you to the 2024 Toward Home Alliance (THA) Staff Conference: Practice-Inspired Leadership. The purpose of the Conference is to celebrate our passionate and dedicated workforce.

Now in its fourth year, the THA Conference provides an opportunity to learn, listen and continue to build on our relationships, in our shared commitment to 'Work together, to prevent and end homelessness'.

Once again, this conference has been designed with you, our workforce, in mind. We are delighted to bring together a program that centres our work and makes for many rich conversations informing practice, innovation and strategy.

This year, we will also celebrate some key achievements for the Alliance, including our Staff Awards, and the launch of the THA Acknowledgement of Country and 2024-2027 THA Strategic Plan.

Relationships and how we relate to each other, community, partners, and to those accessing our services, defines THA's culture. In offering this day, we hope that you gain new connections and learnings and remain inspired and energised to continue working to share in this challenging and rewarding work.

We take this opportunity to thank you for your commitment to our work, to one another, and to our vision of preventing and ending homelessness.

We look forward to sharing the day with you at the 2024 THA Staff Conference.

Alliance Leadership Team

STAFF AWARDS

The Toward Home Alliance (THA) Staff Awards aim to recognise and celebrate staff contributions to the Alliance's mission and values.

We appreciate you taking the time to acknowledge a fellow THA staff member's achievements by nominating them against one of the following criteria:

- **Exceptional Service:** Demonstrates outstanding commitment to THA's mission and values. Goes above and beyond to contribute to THA's mission to prevent and end homelessness.
- **Teamwork and Collaboration:** Fosters a positive and supportive team environment. Encourages and supports colleagues to achieve shared goals.
- **Innovation and Creativity:** Develops and implements innovative solutions to improve processes and services. Thinks outside the box and suggests new ideas to enhance Alliance performance.
- **Client Centred:** Provides exceptional service to clients with attention to detail and a person-centred approach. Prioritises client needs and delivers tailored solutions.
- **Leadership and Initiative:** Demonstrates leadership skills and takes initiative across their role. Actively supports, encourages and mentors peers to enhance their skills and knowledge.

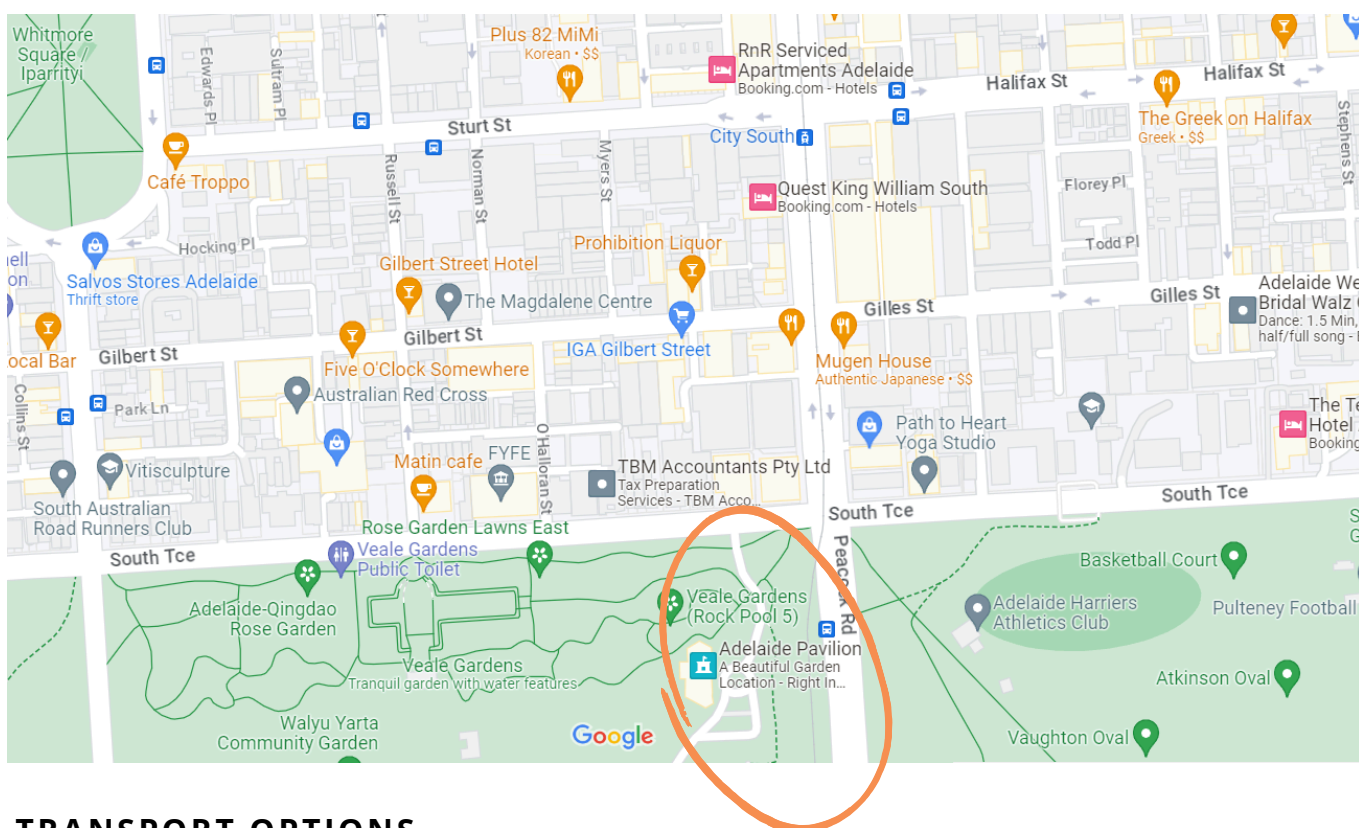
The top three nominees from each category will be announced at this year's conference, and presented by Sandy Pitcher, Chief Executive of the South Australia Department of Human Services.

VENUE

The Adelaide Pavilion, South Terrace

Adelaide Pavilion

Veale Gardens, corner South Tce and Peacock Rd, Adelaide (entrance is from the paved driveway on South Tce)



TRANSPORT OPTIONS

Parking at the venue is limited, so we strongly suggest the use of alternative transport or carpooling to avoid disappointment.

Public transport options:

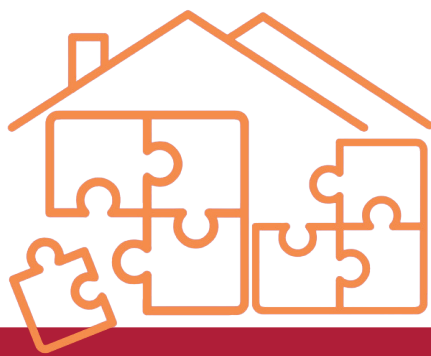
- South Terrace Tram Stop – Peacock Rd (approx. 3-minute walk)
- Bus stop O2 Peacock Rd – West side (approx. 3-minute walk)
- Bus stop K1 King William St – East side (approx. 3-minute walk)
- Bus stop P1 Morphett St – West side (approx. 10-minute walk)

Parking options:

- 80 onsite car parks (subject to availability)
- Gilles Street Park: 12-24 Gilles St, Adelaide (approx. 5-minute walk)
- Mill Street Car Park: 31 Mill St, Adelaide (approx. 9-minute walk)

PROGRAM

CONFERENCE: WEDNESDAY 11 SEPTEMBER

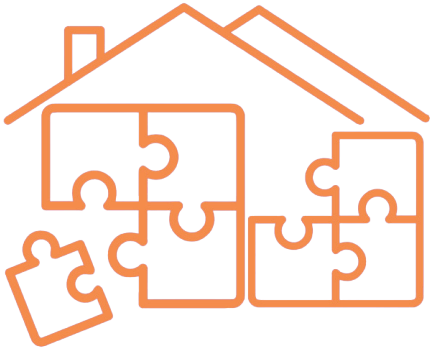


Time	Session
8:15am	Registration Opens Tea and coffee on arrival
8:45am	Welcome to Country (smoking ceremony) <i>Ivan-Tiwu Copley (Uncle Ivan), AFSS Board Member</i>
9:15am	Open and Housekeeping <i>Livia Carusi, Strategic Advisor THA</i>
9:20am	Official Conference Opening <i>The Honourable Minister Nat Cook MP, Minister Human Services</i>
SESSION 1 ADVERSITY INTO INFLUENCE	
9:30am	Adversity into influence through the power of story telling <i>Courtney Ugle</i>
10:45am	Guided Reflection <i>Dana Shen and Tristan Avella-O'Brien</i>
11:00am	Morning Tea
SESSION 2 A GUIDED SOMATIC EXPERIENCE	
11:20am	Connecting with experience through nature (Outside*) <i>Dana Shen and Tristan Avella-O'Brien</i> <small>*weather permitting</small>
12:50pm	Lunch
SESSION 3 ENERGY FROM IMPACT	
1:40pm	Practically sustaining long-term energy and leadership impact (interactive) <i>Kate Rush and panel</i>
3:10pm	Afternoon Break
SESSION 4 THA ACKNOWLEDGEMENT	
3:25pm	Launch of THA's Acknowledgement of Country <i>Alliance Team Leader Network</i>
3:30pm	THA Staff Awards <i>Sandy Pitcher, Chief Executive of the South Australia Department of Human Services</i>
3:50pm	Final comments & wrap up <i>Alliance Leadership Team Representative</i>
4:00pm CONFERENCE END	

Thank you to all of the 2024 THA conference speakers, panelists and facilitators.

NOTES

2024 TOWARD HOME CONFERENCE



toward Home | CHARTER

Working together, giving hope to prevent and end homelessness
Integrity Respect Trust Collaborative Courageous Creative

We Believe

It takes a community to end homelessness.

Home, safety, self-determination, and choice are basic human rights. We walk alongside clients on their self-directed journey.

In valuing, supporting, and empowering our workforce. We know it takes courage to be vulnerable and embrace mistakes as part of our collective learning.

The voice and experience of people with lived experience is at the heart of everything we do. It shapes what we do, how we do it, and influences policies and systems change.

In people's resilience; we 'see' the whole person, listen deeply, and treat everyone with dignity. We embrace and celebrate the diversity of culture, race, ethnicity, age, gender, religion, sexual orientation, gender identity, gender expression, disability, economic status, and other backgrounds and experiences.

Our service practices, frameworks, and models must draw on practice wisdom, evidence, and the lived experience of people and communities.

Homelessness can be traumatic; our work is trauma responsive, culturally understanding, compassionate, and supports recovery and healing.

Culturally strong practices, co-designed with Aboriginal communities, create safety, shared understanding, and healing.

In collaborating and working with the community, sector, government, and other Alliances to innovate and drive positive system reform.