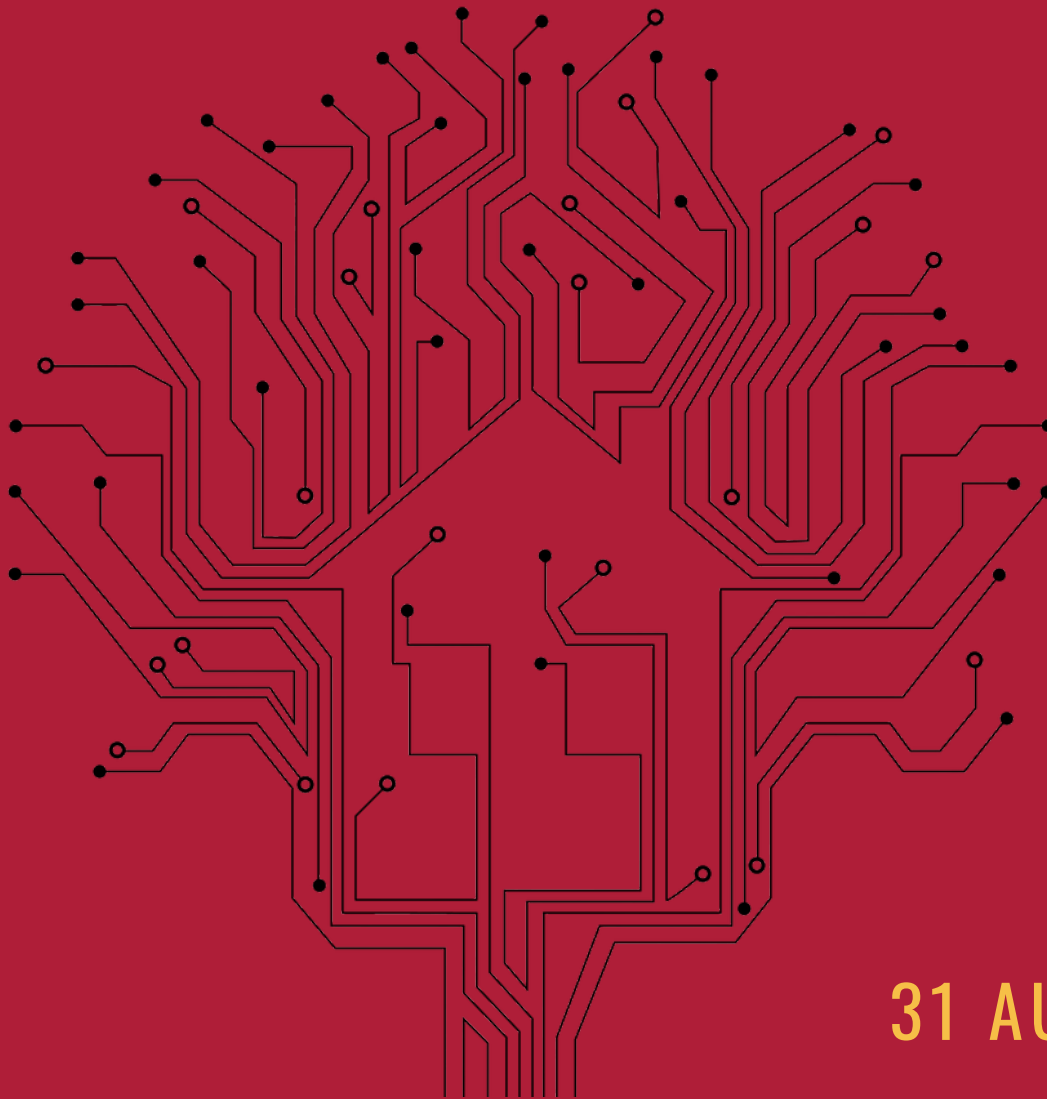




INTEGRITY | TRUST | RESPECT | COLLABORATIVE | COURAGEOUS | CREATIVE

*Connecting the dots*



**31 AUGUST  
2022**

**PRACTICE, POLICY, ADVOCACY & SYSTEM REFORM  
INAUGURAL HOMELESSNESS CONFERENCE**

**ADELAIDE**



# TOWARD HOME ALLIANCE

The Inaugural Toward Home Alliance Homelessness Conference is brought to you by



**baptist  
care sa**

**Hutt St Centre**

end homelessness



**LUTHERAN  
CARE**

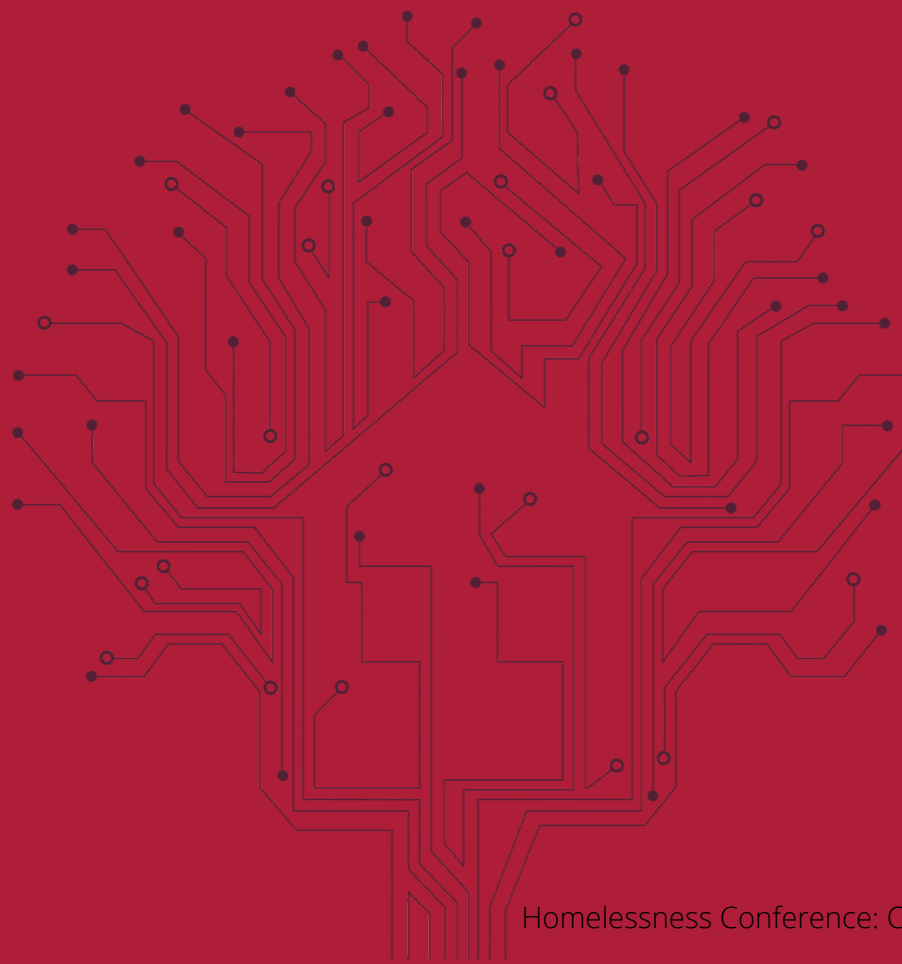
**MISSION  
AUSTRALIA** | together  
we stand



**Sonder**  
Better Care Better Health



**Government of South Australia**  
SA Housing Authority



# WELCOME MESSAGE

Rohan Feegrade  
CEO, Lutheran Care – Lead Agency, Toward Home Alliance  
Chair, Toward Home Alliance

It is my great pleasure to extend to you a very warm welcome to the first annual Toward Home Alliance Conference.

On behalf of the Alliance Leadership Team, I would like to thank and acknowledge all of those involved in the preparation and coordination of this event.

We have a wonderfully rich and diverse program with an outstanding list of guest speakers and panelists to enrich your experience, reflections and learnings. We are especially excited to welcome the Hon. Minister for Human Services, Nat Cook, to officially open this year's conference.

This conference is all about you!

Our workforce is our greatest and most valuable asset. The passion, dedication and commitment to our Mission, exemplified by our workforce, is nothing short of inspirational. A major part of this conference is acknowledging and celebrating the hope and life-changing services you provide to vulnerable people on a daily basis. For this, we humbly acknowledge and thank you.

Finally, I encourage each and every one of you to immerse yourselves in this engaging and unique experience, together with your Toward Home Alliance and sector colleagues, as we continue our journey towards the prevention and ending of homelessness here in South Australia.

*Rohan Feegrade*

# ABOUT THE PROGRAM

Livia Carusi  
Strategic Advisor, Lead, Lutheran Care

Building on the successes of the 2021 Toward Home Alliance Workforce Development Day (October 2021) and in recognition of National Homelessness Week 2022, the THA welcomes you and is pleased to offer this exciting inaugural conference.

Inspired by our Mission of 'Working together, giving hope to prevent and end homelessness', the focus of this year's conference is: Practice, Policy, Advocacy and System Reform. The conference seeks to further our efforts towards our shared mission through connections - of people, of conversations, in action and for change.

In offering this program, we hope that you too gain new connections, new learnings and remain inspired and energised to continue the 'good fight' for a fair and just society where no one is without home.

The 2022 Program focuses on issues central to homelessness, including:

- A new foundation for housing outcomes for Aboriginal and Torres Strait Islander peoples and communities.
- Integrating and Improving healthcare responses.
- Ending veteran homelessness.
- Improving practice and outcomes for children and young people.
- National and state approaches to ending homelessness.

The quality of the program has been made possible by the incredible generosity of all our keynote speakers, panelists and session facilitators. Each will share their own experiences, stories and expertise in the homelessness space. They have been invited to share their vision and insights towards ending homelessness and through this invitation encourage us all to be part of the conversation and change needed to end homelessness.

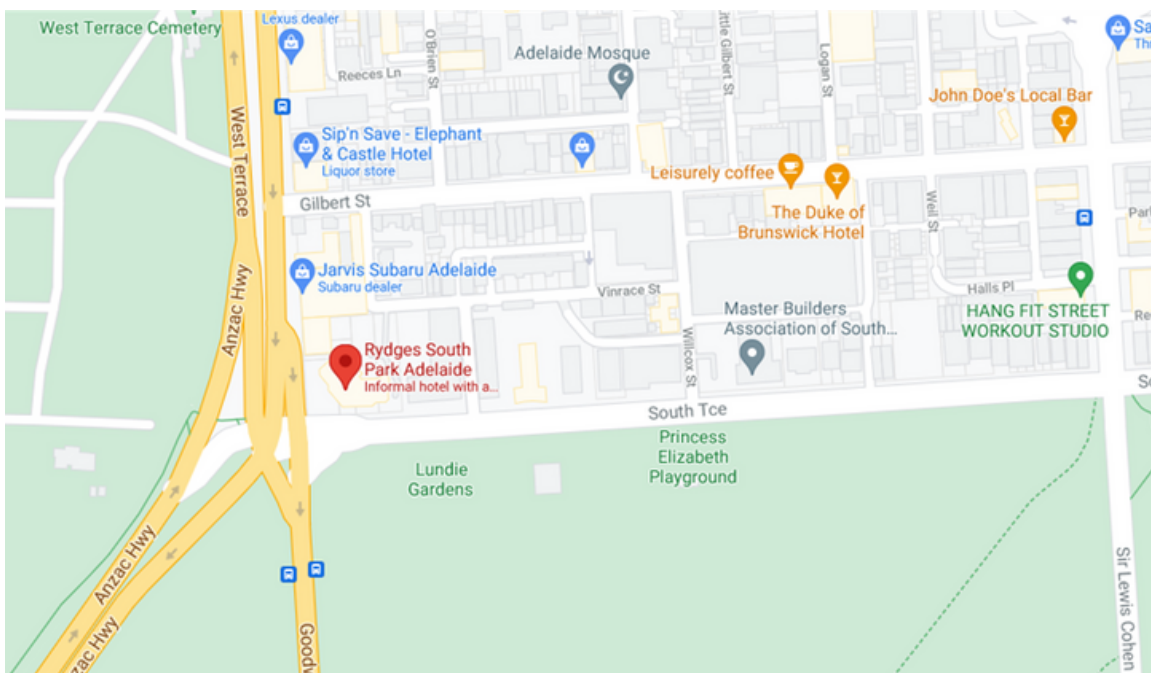
In solidarity,

*Liv Carusi*

# VENUE & TRANSPORT

## VENUE

Rydges South Park - 1 South Tce, Adelaide



## TRANSPORT OPTIONS

Public Transport options include:

- West Terrace bus stop J1, 3 minute walk to venue.
- Goodwood Road/Parklands bus stop L1 and O2, 2 minute walk to venue.
- South Terrace tram stop, 15 min walk.

Parking options include:

- 2 hour limited parking spaces along South Terrace.
- On-site car park at Rydges for \$15 per day.
- 47 South Terrace for \$7 per day.

# PROGRAM

## PART 1 CONFERENCE OPEN & KEYNOTE SPEAKERS

Time	Session	Presenter
8.15am	Registration Opens	Collect your lanyard
8.30am	Conference Seating	Make your way to your allocated table
8.45am	Welcome and Housekeeping	Livia Carusi Strategic Advisor, Lead, Lutheran Care
9.05am	Welcome to Country	Deb Buckskin and Isaac Hannam Baptist Care SA
9:15am	Welcome, Alliance Leadership Team	Rohan Feegrade Chief Executive Officer, Lutheran Care Toward Home Alliance, Lead Agency
9:20am	Official Conference Opening	The Hon. Minister Nat Cook MP Minister for Human Services
9.30am	<b>Keynote address</b> <b><i>Recognise, Rebuild, Restore</i></b> A new foundation for housing outcomes	Neil Willmet Chief Executive Officer Aboriginal & Torres Strait Islander Housing, Queensland
10.10am	<b>Keynote address</b> <b><i>Health, Housing and Homelessness</i></b> Connecting to deliver better outcomes for people & communities	Carmel Williams Director, Centre for Health in All Policies Research Translation, SAHMRI

# PROGRAM

## PART 2 PANEL DISCUSSIONS

10:30am PANEL DISCUSSION - Improving and integrating healthcare responses for people experiencing homelessness

*Chair: Sageran Naidoo, Chief Executive Officer, Sonder*

Neil Willmettt

Chief Executive Officer, Aboriginal & Torres Strait Islander Housing, Queensland

Carmel Williams

Director, Centre for Health in All Policies Research Translation, SAHMRI

Tim Best

A-Z Community and Project Lead, Toward Home Alliance

Chris Burns

Chief Executive Officer, Hutt St Centre

Nick Cowling

Aboriginal Liaison, Royal Adelaide Hospital

10:55am

Morning Tea

11.10am

**Keynote address**  
**Ending Veteran Homelessness**

Nathan Klinge  
Chief Executive Officer, RSL Care SA

11:30am PANEL DISCUSSION

Ending Veteran Homelessness – A Systems Approach

*Chair: Shaya Nettle, Alliance Senior Manager, Toward Home Alliance*

Nathan Klinge

Chief Executive Officer, RSL Care SA

David Pearson

Chief Executive Officer, Australian Alliance to End Homelessness

Ian Cox

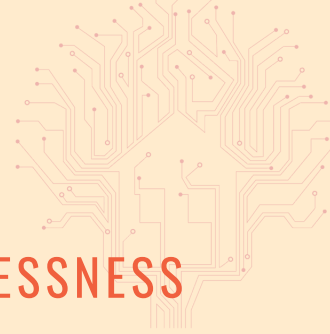
Head, Office for Homelessness Sector Integration, SA Housing Authority



# WORKSHOPS

PART 3 (12PM -1PM)

PRACTICE & SYSTEMS APPROACHES TO END HOMELESSNESS



## WORKSHOP 1

### **Improving Outcomes - Children at risk of or experiencing homelessness**

This workshop will focus on current initiatives designed to improve housing, health and development outcomes for children. In addition, the workshop will also highlight the current work being undertaken by the Alliance towards the development of a practice framework for working with and supporting children at risk of or experiencing homelessness.

*Chair/Scribe: David Campbell, Case Manager, Wardli-ana, Baptist Care SA*

#### **Panel**

- Dr Heather Holst, Commissioner for Residential Tenancies, Victoria
- Dr Theresa Lynch, Pregnancy and Homelessness Coordinating Committee and Network Victoria
- Associate Professor Yvonne Parry, College of Nursing and Health Sciences, Flinders University.

**Part One:** Insight into current initiatives.

**Part Two:** Introduction and practice framework.

## Workshop 2

### **Reigniting the Adelaide Zero Project: Advancing towards Zero**

Want to learn more about your role in Collective Impact efforts to end homelessness in Adelaide and South Australia?

Then this workshop is for you!

*Chair: Tim Best, Lead, Toward Home Alliance & Adelaide Zero Project*

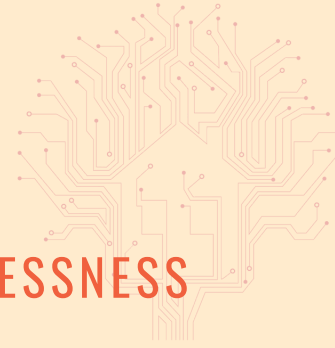
*Co-Chair/Scribe: Robb Smart, Adelaide Zero Project*



# WORKSHOPS

PART 3 (12PM-1PM)

PRACTICE & SYSTEMS APPROACHES TO END HOMELESSNESS



## Workshop 3

### Improving Outcomes - Young people at risk of or experiencing homelessness

Guided by THA's commitment to continuous quality improvement, this workshop will focus on the key principles and core practice features to be considered in the development of a Practice Framework.

This workshop will draw on the lived experience of young people, who have agreed to share their stories with us, to guide and shape the development of a practice framework.

*Chair: Stephanie Keightley, Manager, Pathways to Home Youth Accommodation, Baptist Care SA*

*Scribe: Tayla Callaghan, Case Manager, Pathways to Home Youth Accommodation Baptist Care SA*

## WORKSHOP 4

### Housing Innovation - Insights and possibilities

Drawing on the extensive expertise of the panelists, this workshop will explore current housing initiatives breaking the cycle of homelessness. Panelists will also provide reflections and insights into current government housing and homelessness policy and the structured reforms required to end homelessness.

*Chair: Mychelle Curran, Director TAS/SA, Mission Australia*

*Scribe: Amanda Newmarch, THA Housing Access Coordinator, Lutheran Care*

### Panel

- Karen Aistrope, Chief Executive Officer, Carrington Cottages
- Shane Austin, Chief Executive Officer, Baptist Care SA
- Dr Alice Clark, Chief Executive Officer, Shelter SA
- Bethany Critchley, State Manager SA/WA & NT, Salvation Army Housing
- James Packham, Managing Director, Harcourts Packham
- Pete Zwiers, Head of Programs Kids Under Cover

# PROGRAM

## PART 4 TOWARD HOME COP, CHARTER & AWARDS

Time	Session	Presenter
1:00pm	Lunch	
1:45pm	<b>Keynote address</b> <b><i>Ending Homelessness: A National Approach</i></b>	David Pearson Chief Executive Officer, Australian Alliance to End Homelessness
2:10pm	<b>Keynote address</b> <b><i>Ending Homelessness: A State Approach</i></b>	Caro Mader State Director, South Australian Alliance to End Homelessness
2:35pm	<p>Toward Home Alliance Communities of Practice (CoP)</p> <p><i>Where appropriate, session includes reflections from Conference Workshops</i></p> <p><b>Working with and Supporting Children at Risk, and Experiencing Homelessness:</b> Co-Chairs, Dr Victoria Skinner, SA Housing Authority &amp; David Campbell, Baptist Care SA</p> <p><b>Housing Models and Innovation:</b> Co-Chairs, Amanda Newmarch &amp; Livia Carusi, Lutheran Care</p> <p><b>Working with and Supporting Young People at Risk, and Experiencing Homelessness:</b> Chair, Stephanie Keightley, Baptist Care SA &amp; Tayla Callaghan, Baptist Care SA</p> <p><b>Inner-City Homelessness:</b> Chair, Shaya Nettle, Alliance Senior Manager &amp; Therese Hehir, Mission Australia</p> <p><b>Client Services:</b> Chair, Livia Carusi, Lutheran Care &amp; Juanita Ford, Mission Australia</p>	
3:15pm	Afternoon Break	

# PROGRAM

## PART 5 PARTNERSHIPS, THA CHARTER LAUNCH & LEADERSHIP

Time	Conversation Focus	Lead
3:30pm	Partnership with Good360	Kate Stock State Manager, Good360
3:40pm	Toward Home Alliance Charter Launch	Dr Victoria Skinner, SA Housing Authority Kate McGarry, Baptist Care SA
3:55pm	Values-Led Leadership	Rohan Feegrade, Lutheran Care Livia Carusi, Lutheran Care
4:15pm	2021 Highlights & 2022 Directions	Shaya Nettle Alliance Senior Manager
4:35pm	Closing Comments	Shaya Nettle, Alliance Senior Manager Livia Carusi, Lutheran Care

### Connections Networking Event

*The Deck, Ground Floor, Rydges South Park*

Following the Conference, take up the opportunity to meet and connect with Alliance staff and others working alongside and with the Alliance.

This casual event is being held within Rydges South Park at the 'The Deck, Ground Floor' with live entertainment from 'The Glanville Brothers'.

Light refreshments will be provided and registration is a must!

From  
4:45pm

# THANK YOU

Thank you to the 2022 Conference speakers, panelists & facilitators

**THE HON. NAT COOK MP**

Minister for Human Services  
Member for Hurtle Vale

**DR HEATHER HOLST**

Commissioner for Residential Tenancies,  
Victoria

**DR ALICE CLARK**

Executive Director, Shelter SA

**ASSOCIATE PROFESSOR YVONNE PARRY**

College of Nursing and Health Services,  
Flinders University

**DR THERESA LYNCH**

Pregnancy & Homelessness Coordinating  
Committee & Network Victoria

**CARMEL WILLIAMS**

Director, Centre for Health All Policies  
Research Translation SAHMRI  
Co-Director, WHO Collaborating Centre,  
Health in All Policies

**DAVID PEARSON**

CEO, Australian Alliance to End  
Homelessness

**NEIL WILLMETT**

CEO, Aboriginal & Torres Strait Islander  
Housing, Queensland

**NATHAN KLINGE**

CEO, RSL Care SA

**CARO MADER**

State Director, South Australian Alliance to  
End Homelessness

**JAMES PACKHAM**

Managing Director, Harcourts Packham

**SHAYA NETTLE**

Alliance Senior Manager, Lutheran Care

**IAN COX**

Head, Office for Homelessness Sector  
Integration, SA Housing Authority

**KATE MCGARRY**

Executive Leader Service Pathways, Baptist  
Care SA

**ROHAN FEEGRADE**

CEO, Lutheran Care, Chair THA Lead Agency

**SAGERAN NAIDOO**

CEO, Sonder

**CHRIS BURNS CSC**

CEO, Hutt Street Centre

**SHANE AUSTIN**

CEO, Baptist Care SA

**LIV CARUSI**

Strategic Advisor, Lead, Lutheran Care

**BETHANY CRITCHLEY**

State Manager SA/WA/NT, Salvation Army  
Housing

**KAREN AISTROPE**

CEO, Carrington Cottages

**PETE ZWIERS**

Head of Programs, Kids Under Cover

**ROBB SMART**

Data Lead, Adelaide Zero Project

**TIM BEST**

Lead, Toward Home Alliance & Adelaide  
Zero Project

**STEPHANIE KEIGHTLEY**

Manager, Pathways to Home Youth  
Accommodation, Baptist Care SA

**NICK COWLING**

Aboriginal Liaison, Royal Adelaide Hospital

**MYCHELLE CURRAN**

Director TAS/SA, Mission Australia

**VICTORIA SKINNER**

Innovation Partner, Office for  
Homelessness Integration, SA Housing  
Authority

**KATE STOCK**

State Manager, Good 360

**DAVID CAMPBELL**

Case Manager Wardli-ana, Baptist Care SA

# NOTES
